



TAP ROOM BUNDLES

ENHANCE COLLABORATION IN EVERY SPACE



For more information:
Contact your Laketec Account
Representative

TAP INTO BETTER MEETINGS

Logitech's new Tap Room Solutions Bundles include everything you need to easily deploy touch-enabled **Google Hangouts Meet**, **Microsoft Teams Rooms**, or **Zoom Room** video conferencing in any size meeting room.

With calendar integration, instant content sharing, and always-on readiness these bundles include all the components you need and are pre-configured with room-optimized platforms from Google, Microsoft, or Zoom Room. Designed as a simple touch-to-join meeting controller, Tap delivers reliable convenience in the meeting room by enabling a frictionless user experience for joining video meetings.

Jumpstart Support

Microsoft Tap bundles include Logitech Jumpstart, which helps customers deploy as a Skype or Microsoft Teams Room System.

For 90 days from the date of purchase, you have access to configuration and support resources to assist with system, software, and security configuration.



BUNDLES FOR SKYPE AND TEAMS ROOMS



TAP BASE BUNDLE

USB-connected touch controller designed for the workplace. Multiple mounting options and long and strong cabling for beautiful integration into most any interior location. Plug-and-play connectivity offers an additional display and opens the door to new applications and user experiences.

WHAT'S INCLUDED:

- Logitech Tap Touch Controller
- Logitech Strong USB 10m
- Configured Intel NUC
- PC Mount
- Pre-configured for Microsoft Teams Rooms
- 90 days of Jumpstart Support

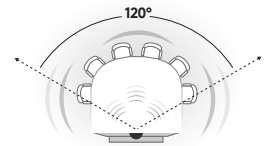


TAP SMALL ROOM BUNDLE

The MeetUp conference camera further improves the Logitech Tapvideo conferencing experience with super-wide 120° degree field of view, pan/tilt lens, 4K Ultra HD, and 3 camera presets. Integrated audio optimized for huddle rooms. Three beamforming mics and a custom tuned speaker ensure everyone is seen and heard.

WHAT'S INCLUDED:

- Logitech Tap Touch Controller
- Logitech Strong USB 10m
- Configured Intel NUC
- PC Mount
- Pre-configured for Microsoft Teams Rooms
- 90 days of Jumpstart Support
- One 3m HDMI cables
- One 16 ft CAT6 cable
- One 9 ft Micro USB cable for AV Passthrough
- MeetUp ConferenceCam + Remote
- 16 ft USB cable
- Meetup wall mount and hardware

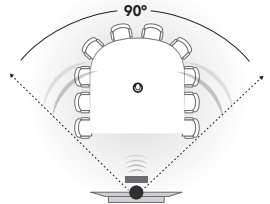


TAP MEDIUM ROOM BUNDLE

The Rally video conferencing system further improves the video conferencing experience with its vocal clarity, whisper-quiet mechanical Pan/Tilt/Zoom, 15X HD zoom, 90° field of view, and 4K sensor, combined with Logitech's RightSense™ technologies that automatically frame human figures and optimize color and luminance for human faces.

WHAT'S INCLUDED:

- Logitech Tap Touch Controller
- Logitech Strong USB 10m
- Configured Intel NUC
- PC Mount and Rally Camera Solution Mount
- Pre-configured for Microsoft Teams Rooms
- 90 days of Jumpstart Support
- One 3m HDMI cables
- One 16 ft CAT6 cable
- One 9 ft Micro USB cable for AV Passthrough
- Rally Camera
- Rally Display + Table Hubs + Rally Speaker + Mic Pod
- Remote control + Connection cables

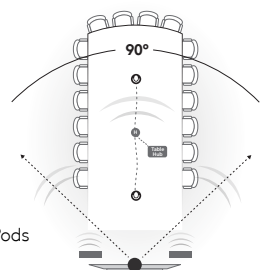


TAP LARGE ROOM BUNDLE

Rally Plus brings all of the benefits of Rally to larger spaces. With two beam-forming mic pods and two rare-magnet speakers, up to sixteen participants can be seen and heard with near-perfect clarity. Additional mic pods (sold separately, maximum 7) can bring the Rally conferencing system to groups of up to 46 people. This modular solution is the perfect fit for large conference rooms.

WHAT'S INCLUDED:

- Logitech Tap Touch Controller
- Logitech Strong USB 10m
- Configured Intel NUC
- PC Mount and Rally Camera Solution Mount
- Pre-configured for Microsoft Teams Rooms
- 90 days of Jumpstart Support
- One 3m HDMI cables
- One 16 ft CAT6 cable
- One 9 ft Micro USB cable for AV Passthrough
- Rally Camera
- Rally Display + Table Hubs + 2 Rally Speakers + 2 Rally Mic Pods
- Remote control + Connection cables



* MSRPs subject to change



BUNDLE ACCESSORIES

MEETUP EXPANSION MIC



Add-on microphone for huddle room flexibility increasing MeetUp's audio reception range from 8ft. to 14ft.

FEATURES:

- Hear clearly up to 14 feet
- Easily mute calls
- Mute, Bluetooth, and active calling indicator lights

MEETUP TV MOUNT AND XL TV MOUNT

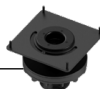


Securely mount Logitech MeetUp to a TV or monitor using the industry-standard VESA mounting points available on most TVs and monitors.

FEATURES:

- Uses VESA mounting points
- A size for every screen
- Attach above or below monitors
- Works with most flat-panel TVs

TAP TABLE MOUNT

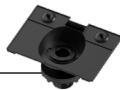


Swiveling table mount to securely and conveniently install your Logitech Tap video conferencing touch controller on a table.

FEATURES:

- Retains the Tap's 14° screen angle
- Pivots 180°

TAP RISER MOUNT



This riser mount elevates the Tap to a 30° screen angle, increasing visibility in large rooms. It pivots 180° to allow multiple users to access the Tap.

FEATURES:

- Increasing visibility
- 30° screen angle
- Pivots 180°

TAP WALL MOUNT

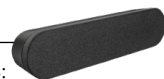


Wall mount lies flush on the wall using a plate and cleat construction. It comes with an cable cinch for hanging an HDMI cable for content sharing.

FEATURES:

- Supports the Tap's built-in cable exits
- Lies flush on the wall
- Plate and cleat construction

RALLY SPEAKER



Rally speakers align voices with video for a "front of room" audio experience. A second speaker can be used to expand the soundstage for larger rooms.

FEATURES:

- RightSound™ technology for audio clarity
- Deploy two speakers for expanded audio range

RALLY MIC POD



Add-on microphones for Rally contain multiple beamforming elements that focus on active speakers while automatically eliminating acoustic distractions.

FEATURES:

- Unmatched voice clarity
- RightSound™ technology for automatic audio calibration
- Connect up to 7 mics for maximal voice clarity

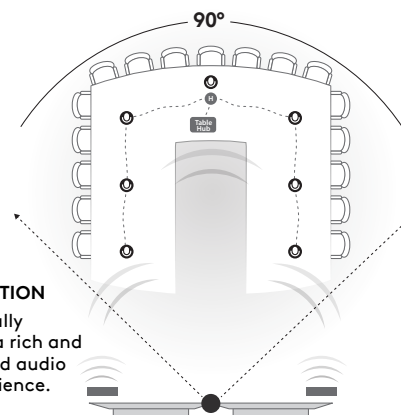
RALLY MIC POD HUB



Flexible microphone placement for Logitech Rally. Connect up to 3 Rally Mic Pods with a single cable providing expanded deployment for greater flexibility.

FEATURES:

- Connect up to 3 Rally Mic Pods with a single cable
- Eliminate hairpin cabling with flexible mic placement



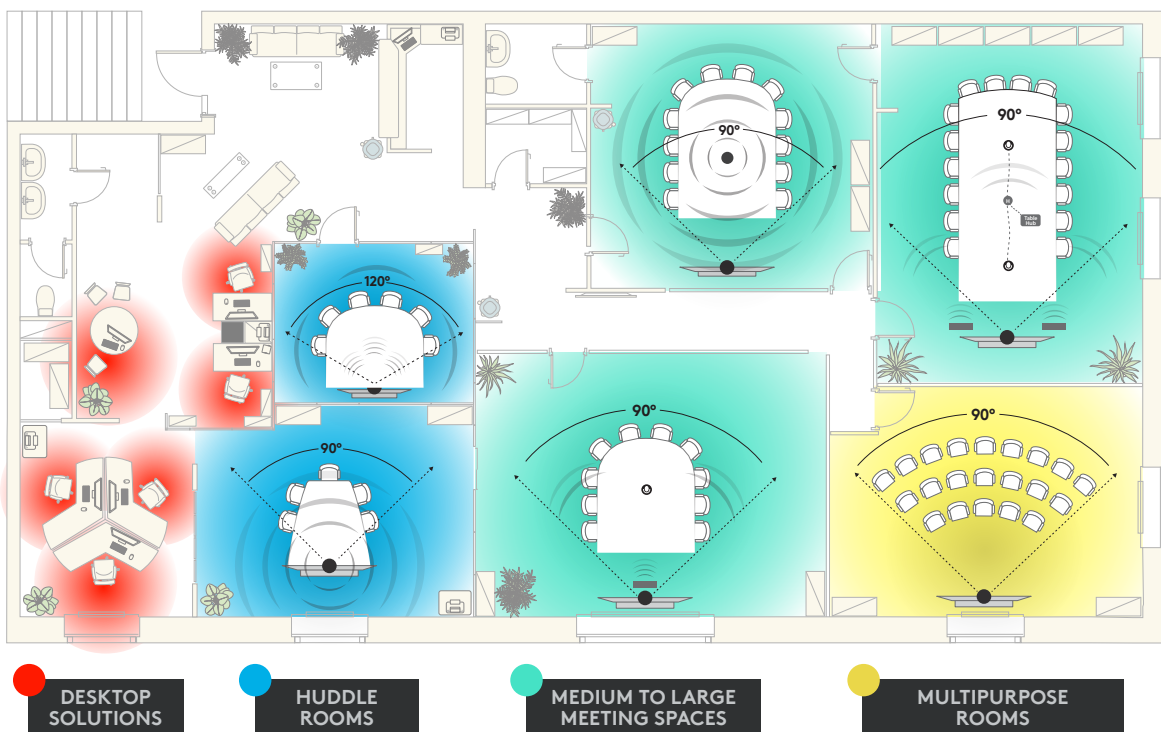
RALLY ROOM SOLUTION

When combined, Rally accessories create a rich and productive video and audio collaboration experience.

BUNDLES FOR EVERY ROOM



Designed for small to large-sized groups, for use with any video conferencing application, optimized and certified for Skype for Business. Logitech ConferenceCams deliver crystal clear audio and razor sharp video that is so amazingly affordable, any meeting place can be a video collaboration space.



For more information:
Contact your Laketec Account
Representative

Published May 2019

© 2019 Logitech. All rights reserved. Logitech, the Logitech logo and other Logitech marks are owned by Logitech and may be registered. All other trademarks are the property of their respective owners. Logitech assumes no responsibility for any errors that may appear in this publication. Product, pricing and feature information contained herein is subject to change without notice.

LAKETEC
VOICE | NETWORK | CLOUD

logitech

V190501