

## DATA SHEET

# ARUBA CENTRAL

## Unified Cloud-Native Network Operations and Assurance

Aruba Central is designed to simplify the deployment, management and optimization of wireless, wired and SD-WAN environments. The addition of integrated AI and ML-based network and user insights, IoT device profiling for secure, unified management and control enhances traditional management for today's mobile, IoT and cloud networking demands.

Streamlined network operations, centralized monitoring and control, advanced analytics and assurance, detailed alerts, reporting and troubleshooting combine to save time and resources. This allows IT to focus less on managing the infrastructure and more on creating value for the business.

### STREAMLINED NETWORK OPERATIONS

It all begins with the interface, which should be informative and easy to use. Aruba Central provides quick and easy access to the data required to manage, analyze and maintain your networks, devices and clients without the need to switch between applications or dashboards. This saves time and reduces the learning curve while improving the management of your environment.

Onboarding of devices is a key activity in any environment, but can be time consuming and complex. Aruba Central includes three solutions to make your life easier: a setup-wise wizard, Zero Touch Provisioning, and an integrated installer app.

The setup wizard is a step-by-step workflow to automatically add account subscriptions, synchronize device inventory from orders, and assign subscriptions to devices. This saves time, improves accuracy, and reduces the resources required to onboard devices into your environment.

### KEY FEATURES

- Streamlined context-aware navigation
- Simplified operational workflows
- Centralized management and control
- Advanced analytics and assurance
- Intelligent mobile and IoT device security
- Unified Wi-Fi, wired and SD-WAN support

WELCOME JOHN DOE (CID: 201908700478)

**GET STARTED WITH CENTRAL**

**1 ADD SUBSCRIPTION KEY** **2 ADD DEVICES** **3 ASSIGN SUBSCRIPTIONS**

**DEVICE SUBSCRIPTIONS 1**

☒ Auto Subscribe OFF  
You must MANUALLY assign subscriptions by selecting your devices below.

**DEVICES (1/33 TO BE SUBSCRIBED TO CENTRAL)**

TYPE	SERIAL NO.	MAC ADDRESS	MODEL NO.
IAP	VSTL010000	71:29:C1:2C:F0:00	IAP - 205
IAP	VSTL010000	71:29:C1:2C:F0:00	IAP - 205
IAP	VSTL010000	71:29:C1:2C:F0:00	IAP - 205
IAP	VSTL000988	71:29:C1:2C:F0:00	IAP - 205
IAP	VSTL000985	71:29:C1:2C:F0:00	IAP - 205
<input checked="" type="checkbox"/> IAP	VSTL000985	71:29:C1:2C:F0:00	IAP - 205
IAP	VSTL000985	71:29:C1:2C:F0:00	IAP - 205
IAP	VSTL000989	71:29:C1:2C:F0:00	IAP - 205

**FINISH**

**Figure 1: Setup wizard for simplified onboarding**

Zero Touch Provisioning (ZTP) simplifies network deployment. Configuration parameters are defined centrally for Aruba access points, switches, or branch gateways. Regardless of location, as devices are unpacked and powered up by any installer, each device connects to Aruba Central and automatically receives its running configuration.

The integrated installer app allows you to delegate the installation and deployment of devices to a trusted resource or third-party service provider. The app lets you define the access privileges of an installer and track the onboarding process as devices are scanned and added to the assigned network. The ZTP process is then used, and the status of devices is instantly updated in the Central installer dashboard.

## CENTRALIZED MANAGEMENT AND CONTROL

The first thing you'll notice is the network health overview. This is the primary dashboard, which provides a global or site view of all managed devices. A quick switch to a list view displays a detailed list of device usage, utilization and noise, along with WAN up link and tunnel status.

At-a-glance views Wi-Fi & WAN connectivity and AI-Insights are also a mere click away. Providing comprehensive visibility and control at the global level, to quickly identify areas that need attention. Selecting a site changes the interface to only those items relevant for sites, and the same is true for devices and clients.

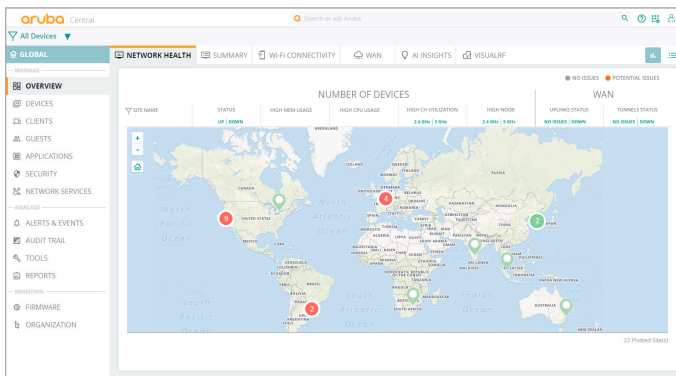


Figure 2: Network Summary

## ADVANCED ANALYTICS AND ASSURANCE

With continuous monitoring, AI-based analytics provide real-time visibility and insight into what's happening in the Wi-Fi network. The insights utilize machine learning that leverage a growing pool of network data, and deep domain experience.

The result is a consistent, reliable and timely flow of information about the RF environment, that helps IT work smarter to deliver an optimal Wi-Fi experience, despite increasing demands and the complexity that a growing network often brings.

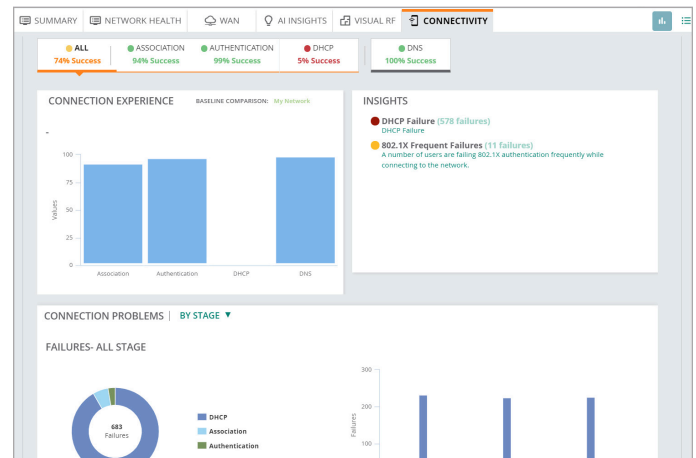


Figure 3: AI-based connectivity insights

## ALERTS, REPORTING AND IN-DEPTH TROUBLESHOOTING

Aruba Central includes the ability to create comprehensive alerts that cover device connectivity, network health and user account activity. A stepwise reporting wizard is also provided to generate scheduled and on-demand reports, highlighting network and application health, throughput and usage data, device and client inventory and activity auditing.

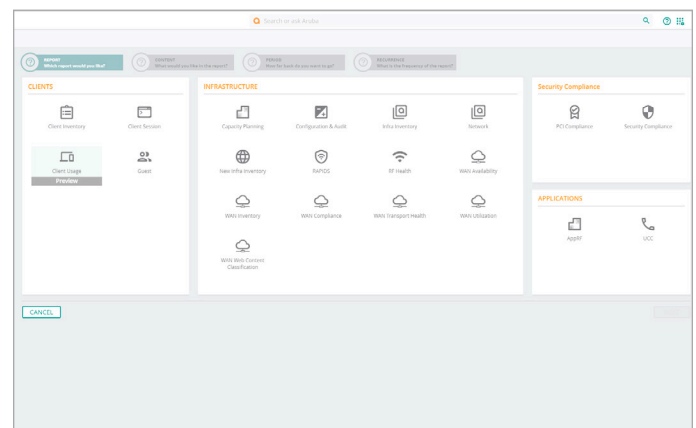


Figure 4: Stepwise Reporting Wizard

When a problem occurs, quick identification, characterization and resolution are at the core of maintaining a stable environment. Here again, Aruba Central's intelligent AI-Insights deliver the right context-based information at the right time, thus providing a more efficient alternative to event or command line based troubleshooting. However, detailed events and integrated command line tools are available when needed.

## SD-WAN MANAGEMENT

The monitoring and control of SD-WAN headend and branch gateways allows IT to centrally manage the infrastructure and routing of traffic over MPLS, broadband and cellular links. Aruba Central also provides:

- Integrated topology views for graphical representation of gateways and details per site
- Application performance scores for WAN circuit health, bandwidth availability and tunnel status for each site
- WAN orchestration for the management of routing preferences across branch locations and data centers
- Virtual Gateway management to directly extend policies to the public cloud hosted gateways

Workflows also exist that allow IT to look into specific device, policy or circuit configuration information to improve the user experience.

## AUTOMATED MOBILE AND IOT DEVICE SECURITY

To facilitate the deployment of mobile and Internet of Things (IoT) devices, Aruba Central can directly display information gathered from Aruba ClearPass Device Insight, which offers AI/ML based profiling. Device Insight automatically categorizes all devices on any wired or wireless network.

The use of packet inspection also allows Aruba Central to create behavioral profiles for the devices connected to the network. IT can use Aruba Central to see specific traffic patterns for any device to ensure that a device is actually what it is displayed as.

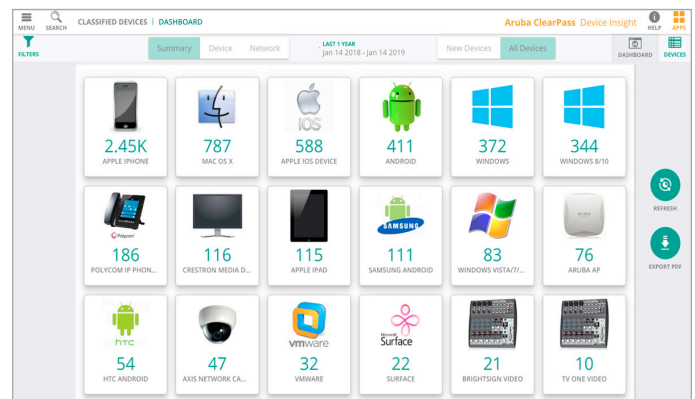


Figure 5: Mobile & IoT device visibility for accurate policy use

## CLOUD SECURITY AND RELIABILITY

Designed from the ground up, Aruba Central ensures the highest possible availability through:

- A web-scale database design for responsive performance, even when working with large amounts of data
- Service redundancy, hosted from data centers worldwide in multiple locations
- Secure HTTPS connectivity, with certificate-based authentication for the highest level of protection

## FLEXIBLE PRICING AND SUPPORT

A simple pricing model makes it easy to build the right solution for every business and budgetary need. This includes:

- Device subscriptions for base management, and services subscriptions for value added guest Wi-Fi and user analytics
- Ability to utilize subscriptions across devices and services
- Online and phone support for any technical issue

## ORDERING INFORMATION

Part Number	Description
<b>Device Management Subscription</b>	
JY925AAE	Aruba Central Device Management Subscription for 1 Year
JY926AAE	Aruba Central Device Management Subscription for 3 Years
JY927AAE	Aruba Central Device Management Subscription for 5 Years
<b>Services Subscription</b>	
JY928AAE	Aruba Central Services Management Subscription for 1 Year
JY929AAE	Aruba Central Services Management Subscription for 3 Years
JY930AAE	Aruba Central Services Management Subscription for 5 Years
<b>Refer to the following portfolio pages for additional information on Aruba Access Points, Switches and SD-WAN networking solutions</b>	
Access Points: <a href="https://www.arubanetworks.com/products/networking/access-points/">https://www.arubanetworks.com/products/networking/access-points/</a>	
Switches: <a href="https://www.arubanetworks.com/products/networking/switches/">https://www.arubanetworks.com/products/networking/switches/</a>	
SD-WAN/SD-Branch: <a href="https://www.arubanetworks.com/products/networking/gateways-and-controllers/">https://www.arubanetworks.com/products/networking/gateways-and-controllers/</a>	

**Note:** Aruba Central Managed (CM) SKUs are available to simplify ordering within the U.S. and Canada. Refer to the WLAN Access Point and Switch Data Sheets for more information.